

CERTIFICATE OF LOCATION OF GOVERNMENT CORNER

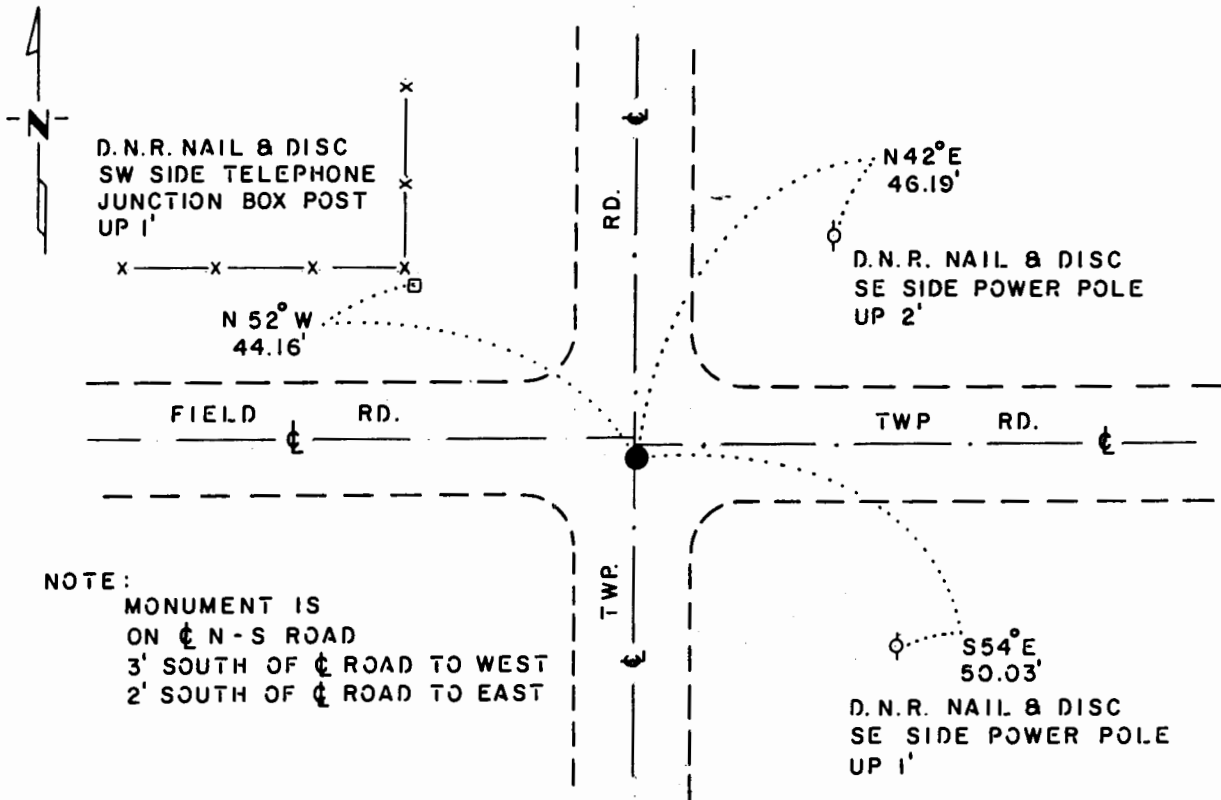
NORTHEAST Corner of Section 21, Township 106 N., Range 42 W., 5th P.M.

STATE OF MINNESOTA, County of MURRAY

At the corner location shown on the sketch:

- On 11-3-83 found a 5"x10"x18" FIELD STONE, DOWN 23" WITH A 4' END
DATE
OF LOG CHAIN WRAPPED AROUND IT
 - left monument as found, lowered monument, removed monument (explain).
- On 11-3-83 placed a 1 1/4"x1 1/4"x18" PERFORATED STEEL TUBE WITH
DATE
ALUMINUM CAP STAMPED "D.N.R. SURVEY MARKER" OVER STONE, DOWN 0.3'

SKETCH OF REFERENCE TIES



NOTE:
 MONUMENT IS
 ON \perp N-S ROAD
 3' SOUTH OF \perp ROAD TO WEST
 2' SOUTH OF \perp ROAD TO EAST

BEARINGS OBSERVED WITH COMPASS

Statement of evidence relative to this corner location is on back of page.

J. B. M. 4-3-84
 G-1158

I hereby certify that this document and the data contained herein was prepared by me or under my direct supervision.

Lowell R. Pomeroy 6-16-86
SIGNATURE DATE

Registration No. 17005

- Land Surveyor, Professional Engineer
- County Surveyor, County Engineer

OFFICE OF THE COUNTY RECORDER

County of _____

I hereby certify that this document was filed in the Co. Recorders office at _____ .M. on the _____ day of _____ A.D., 19 _____

County Recorder _____

By _____, Deputy

DOCUMENT NO. _____

Northeast Corner Section 21, Township 106 North, Range 42 West

This corner was originally established by the U. S. General Land Office survey in 1866. The government notes show corner marked with a wood post set in mound of earth with pits and trench dug around the mound.

In November 1983, the DNR Bureau of Engineering contacted the Murray County Offices of the Recorder and Highway Engineer for corner information.

No resurvey information was obtained for this corner.

On November 3, 1983, the DNR Bureau of Engineering hired a backhoe operated by Johnson Tiling of Lake Wilson to dig for evidence of this corner. Found a 5" by 10" by 18" field stone down 23" with a 4 foot end of a log chain wrapped around it. Also found:

A 6" by 12" by 8" field stone down 27" on south side of first stone.

A 8" by 14" by 14" field stone down 25" on north side of first stone.

A 4" by 7" by 8" field stone down 27" on east side of first stone.

An old deteriorated wood hub on east side first stone. Left stones as found and set a 1" square channel pipe 4" by 8" long on north and south side of first stone.

Accept first stone found, with log chain wrapped around it, as the location of the corner.

Traverse information is available from the DNR Bureau of Engineering.

4hab/cors